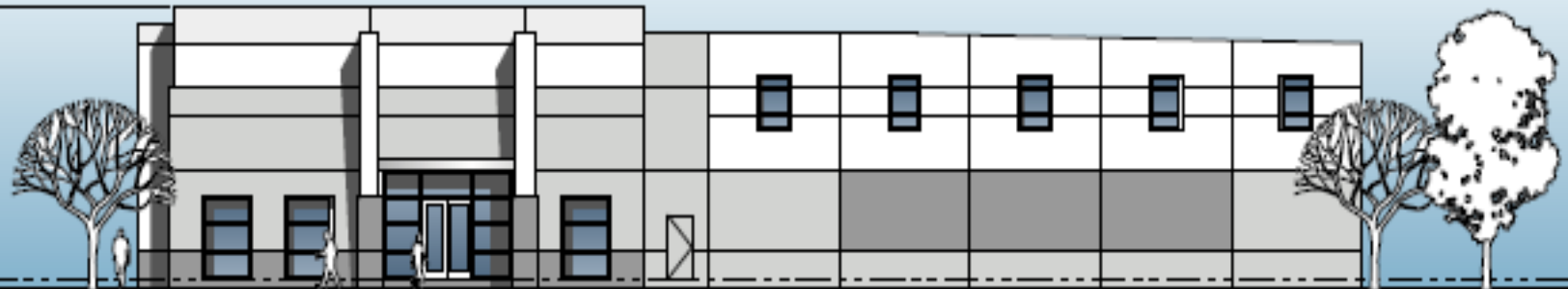


SOUTHERN CALIFORNIA LOGISTICS CENTRE



* Artist Rendering

BUILDING 518

66,000 SF +/- (Divisible)

13236 Mustang Street, Victorville, CA 92394

SCLC ADVANTAGES:

- Multimodal Logistics Centre
- Minutes from I-15 and U.S. 395
- Less than 100 Miles From the Ports of Los Angeles and Long Beach
- Optimal Location for Interstate and International Distribution
- Mojave Desert Air Quality Management District
- 3VSUWf Air Cargo Services
- Abundant Skilled Workforce at Competitive Rates
- Competitive Operating Costs/Lowest in the Region
- Project-Wide Expansion Opportunities
- Master Planned Business Association with On-Site Patrol
- On-site Property Management

INCENTIVES:

- Municipalized Utilities/Low Cost Reliable Power
- County Workforce Development Assistance
- Onsite Secured U.S. Customs
- 2,600-Acre Foreign Trade Zone (FTZ #243)

LOCATION:

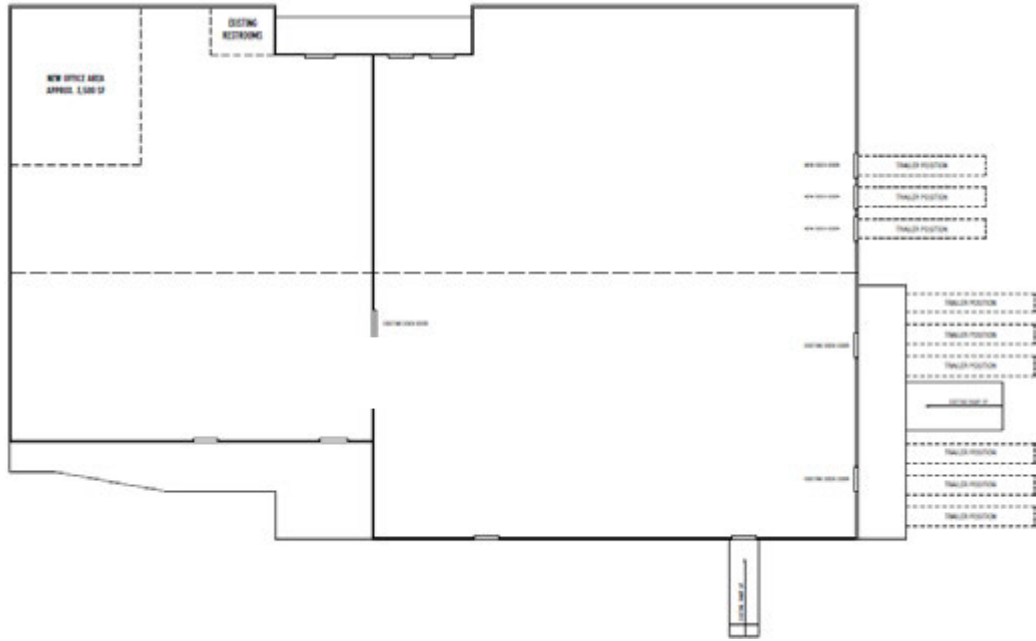


A MASTER DEVELOPMENT OF

STIRLING



SITE PLAN:



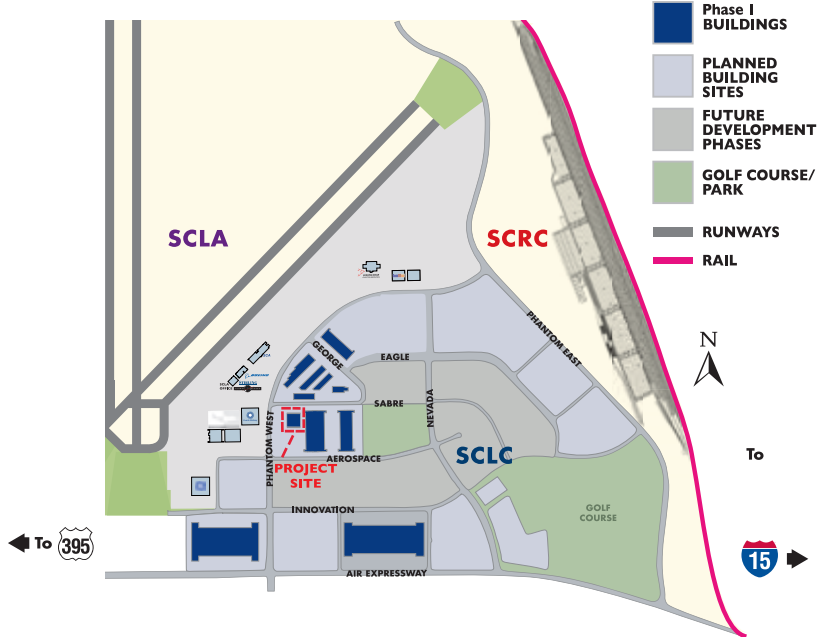
BUILDING 518

13236 Mustang Street, Victorville, CA 92394

BUILDING FEATURES:

- Site: 3.97 acres
- Building: 66,000 sf
- Square Footage Available: 20,000 - 66,000 sf
 - Parking Available:
 - Autos: 74 Stalls
 - Loading Available:
 - Dock High Doors: 6
 - Ground Level Doors: 3
- Clear Height: 18' - 21'
- Offices: Build-to-Suit
- Fire Sprinkler System
- Future Yard Storage Available

MASTER PLAN:



Jay Dick, CBRE
909.418.2149

www.globalaccessvictorville.com

Anita Tuckerman, Stirling
760.778.1000



Managed and Developed by a Public/Private Partnership

